



655148 ProClip

Center mount

The ProClip is a mounting bracket that you attach onto the vehicle's dashboard. It provides a mounting platform for mobile phones and other devices that you want to have within easy sight and reach in the car. Safe, neat and convenient! The ProClip has a perfect fit, it is custom made for each vehicle to ensure a secure base for installations.

The ProClip is easy to install. The bracket simply snaps into place in gaps in the dashboard, you do not need to drill holes, not use special tools or not dismantle the dashboard. Made in black ABS plastic. Comes with detailed installation instructions. The mounting plate is equipped with predrilled holes which make the installation of equipment on the ProClip easier. The holes suit all Brodit holders and other products with standard holes, the hole pattern consists of one set of AMPS-holes as well as two sets of double-holes placed in different height.

EAN: 7320286551489

Item no 655148 fits:

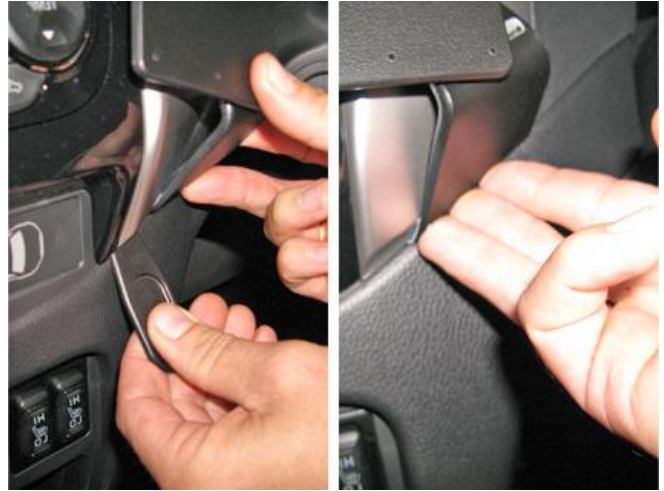
Fiat Fullback 16-21 (England)
Mitsubishi L200 16-19 (England)
Mitsubishi Triton 16-19 (Australia)

INSTALLATION INSTRUCTIONS

1.



2.



3.



4.



Please read the instructions and look at the pictures before installing the ProClip.

1. Use the enclosed alcohol pad to clean the area where the ProClip is to be installed. Press the thin end of the enclosed gap opener into the gap dividing the center control panel, to widen the gap. Remove the adhesive tape cover on the ProClip.
 2. Starting with the left corner; insert the lower edge of the ProClip into the gap next to the gap opener. Press the edge all the way into the gap. Remove the gap opener.
 3. Pull the ProClip upward so the angled upper edge hooks around the lower edge of the air vent.
 4. The ProClip is in place.
-