

Description: Ace Heavy Duty Right Mount Bracket

Fits With: Citroen Dispatch 10/2016> / Citroen Space Tourer 10/2016> / Peugeot Expert 10/2016> / Peugeot Traveller 10/2016> / Toyota Pro Ace 10/2016> / Toyota Pro Ace Verso 10/2016> / Vauxhall Vivaro 01/2019> / Vivaro Life 01/2019>

Part Number: 501913

Kit Contents:

1 x 501913RM - Right Mount Bracket (3 Sections)
1 x SK-04 – Fixing Kit

1.

Open the glove compartment lid by pressing the release button located in the bottom right corner. (See Image>)



2.

Using a Torx T20 screwdriver remove the four self-tapping screws (See Image>)



3.

Using a trim removal tool carefully unclip the glove compartment light and then slide the light assembly towards the front of the vehicle to remove it. (See Image>)

Note: Take care not to damage the Light Switch when removing because it protrudes through the hole in the front edge of the glove compartment liner.

Once the light assembly is removed disconnect the power connector and remove the light assembly from the vehicle.



4.

Unclip the glove compartment liner by pulling it carefully towards the rear of the vehicle, then store it in a safe place. (See Image>)



5.

Release the steering column adjuster lever and then lower and extend the steering wheel towards the back of the vehicle, away from the instrument cluster.

Using your fingers carefully squeeze the four clips then unclip the soft steering column trim from the bottom of the instrument binnacle surround trim. (See Image>)



6.

Using the trim removal tool carefully unclip the instrument binnacle surround trim starting in the top left corner working clockwise. (See Image>)



7.

Carefully unclip and remove the connector from the back of the climate control unit, and then remove the dashboard surround trim from the vehicle. (See Image>)



8.

Using a T20 Torx screwdriver remove the two self-tapping screws holding the top of the right lower dashboard trim. (See Image>)



9.

Install the bottom bracket supplied, using the Two Torx T20 self-tapping screws that were removed earlier. (See Image>)



10.

Locate the top bracket in position so the left edge of the bracket is level with the right edge of the rectangular hole, ensure the bracket sit flat against the top of the dashboard so the instrument binnacle surround trim can be re-fitted later.

Once the bracket is in correct position mark the two mounting holes with a pencil and then remove the bracket and drill the two holes using 4mm diameter drill bit. (See Images 10 – 11>)



11.

Position the top bracket over the drilled mounting holes and then secure the bracket to the dashboard using the machine screws, flat washers and nylok nuts supplied. (See Image>)



12.

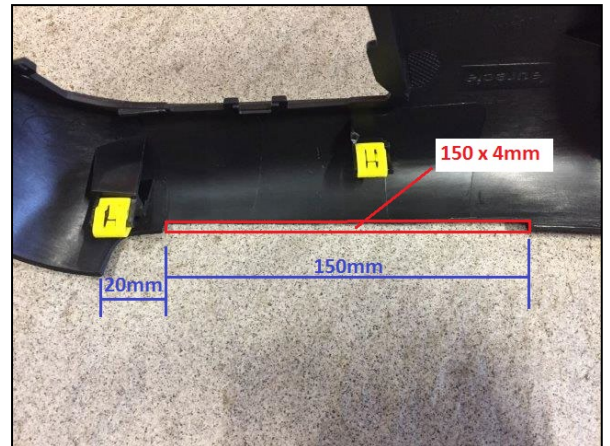
Turn the instrument binnacle surround trim upside down and then using a sharp knife carefully remove the locating peg highlighted on the image, this is situated between the two yellow mounting clips above the right air-vent assembly. (See Image>)



13.

Remove the air-vent assembly by carefully squeezing the metal spring clips that hold it into position, then using a tape measure and pencil measure 20mm inwards from the corner edge of the trim as highlighted and then mark a line on the trim with a pencil (See image>)

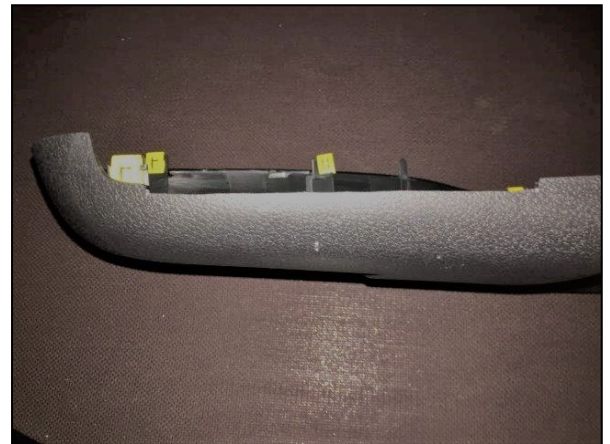
Using the pencil line mark out the 150 x 4mm section that will need to be removed from the bottom edge of the trim under the right air-vent assembly.



14.

Using a sharp knife remove the 150 x 4mm section of plastic highlighted in red (See Image 13>)

Re-fit the air-vent assembly back into the instrument binnacle surround trim so it is ready to be re-fitted.



15.

Re-connect the connector to the back of the climate control unit. (See Image>)



16.

Connect the soft steering column trim to the bottom of the instrument binnacle surround trim and then carefully place the trim back in position and clip the dashboard surround trim back into position. (See Image>)



17.

Refit the glove compartment liner, then re-connect and install the glove compartment light. (See Image>)



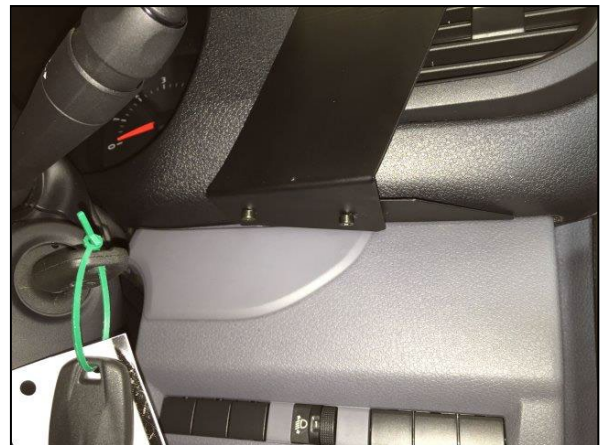
18.

Attach the front section of the mounting bracket over the top of the top bracket fixing, then secure it tightly in position using the machine screws, flat washers & nylok nuts provided. (See Image>)



19.

Attach the bottom section of the bracket under the bottom bracket fixing, then secure tightly using the machine screws, flat washers & nylok nuts provided. (See Image>)



20.

Mount your product / accessory onto the mounting faceplate situated on the front of the bracket.

Image showing the mounting bracket when the installation is completed.

